

Attachment B2

Selected Architectural Drawings



Legend

- (M1) Clear Glass Balustrade fixed to top of concrete slab
- (M2) Brickwork stretcher bond, bowed joint, 'Bowed Blue' Mix
- (M3) Brickwork in R. & M. Mix, bowed joint, 'Bowed Blue' Mix
- (M4) Brickwork in Pattern, bowed joint, 'Bowed Blue' Mix
- (M5) Metal Cladding System with aluminium framing system, aluminium panels, aluminium reveal, copper fins and copper finish
- (G1) Glass, Clear, Aluminium framing system, colour and finish to match RFP2. Refer to Energy Assessment for performance requirements.
- (G2) Glass, Clear, Aluminium framing system, colour and finish to match RFP2. Refer to Energy Assessment for performance requirements.
- (G3) Glass, Clear, Aluminium framing system, colour and finish to match RFP2. Refer to Energy Assessment for performance requirements.
- (G4) Glass, Clear, Aluminium framing system, colour and finish to match RFP2. Refer to Energy Assessment for performance requirements.
- (P1) Paint finish, colour to match Dulux 'Natural White'
- (P2) Paint finish, colour to match Dulux 'Dorset'
- (P3) Paint finish, colour to match Dulux 'Dorset'
- (S1) Vertical Aluminium Blatton System, Colour to match RFP2
- (S2) Vertical Aluminium Screen System, Colour to match C.D.I.

NOTES
 1. ALL MATERIALS TO BE SUPPLIED BY THE CONTRACTOR.
 2. ALL MATERIALS TO BE SUPPLIED BY THE CONTRACTOR.
 3. ALL MATERIALS TO BE SUPPLIED BY THE CONTRACTOR.
 4. ALL MATERIALS TO BE SUPPLIED BY THE CONTRACTOR.

CLIENT
 Zhongde Real Estate Pty Ltd ATF Zhongde Unit Trust
 Suite 1002, 37-59 Balmoral Street
 STONEY NSW 2000

PROJECT TITLE
 Redfern Hotel
 585-591 Elizabeth Street Redfern NSW 2016
 Drawing Title
 GA Elevations East Elevation

DATE
 24.05.18
 15.05.18
 05.06.18

NO.
 1
 2
 3
 4

PROJECT NO.
 DA-250-001

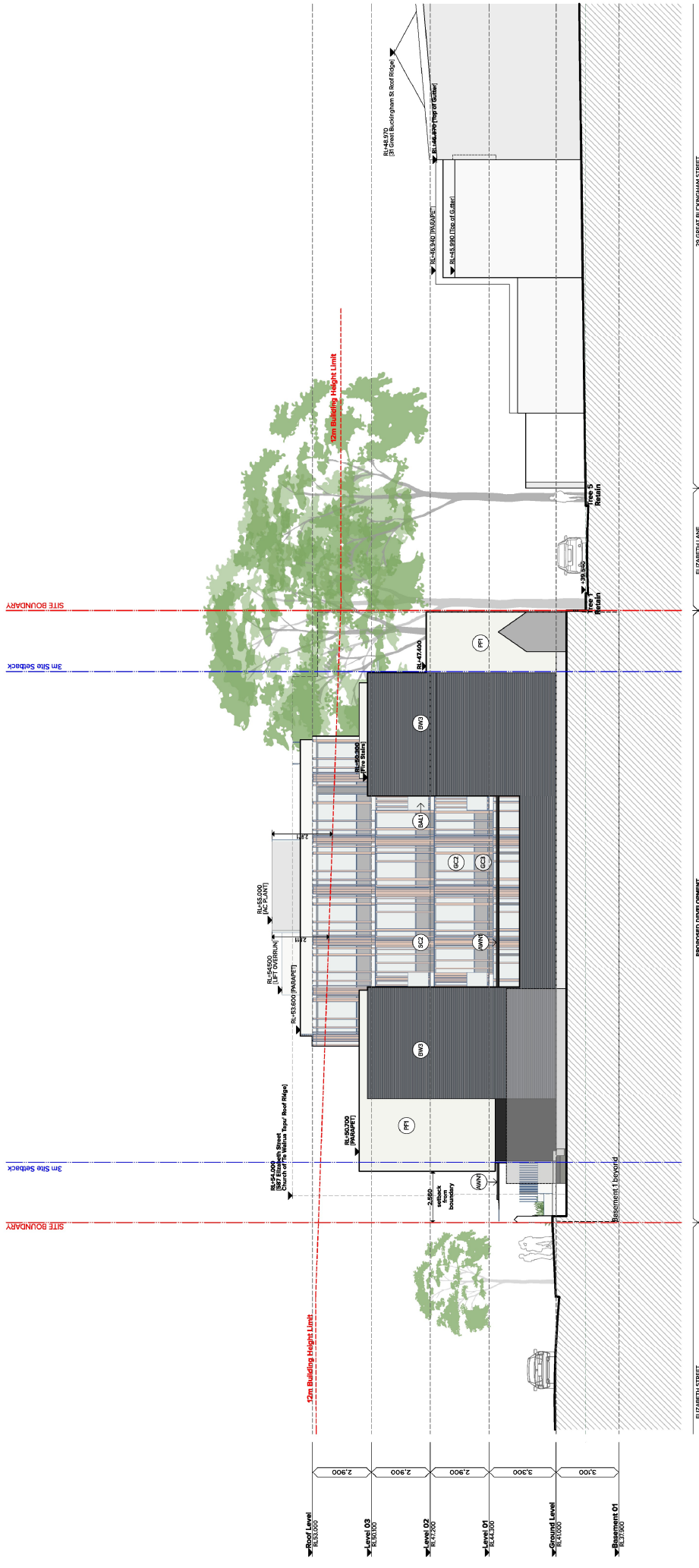
CITY NO.
 18014

CLIENT
 TURNER

DATE
 14.03.2018

PROJECT NO.
 DA-250-001

CITY NO.
 18014



Legend

- (M1) Clear Glass Balustrade fixed to top of concrete slab
- (M2) Brickwork stretcher bond, loosed joint, 'Bowlai Blue' Mix
- (M3) Brickwork in Pattern, loosed joint, 'Bowlai Blue' Mix
- (M4) Brickwork stretcher bond, loosed joint, 'Bowlai Blue' Mix
- (M5) Brickwork in Pattern, loosed joint, 'Bowlai Blue' Mix
- (M6) Metal Cladding System with aluminium pre-painted finish and concealed pre-painted metal cladding pre-painted finish reveals, Copper Finish.
- (G12) Glass, Clear, Aluminium framing system (P20) and Energy Assessment for performance requirements.
- (G13) Glass, Starchback, Aluminium framing system (P20) and Energy Assessment for performance requirements.
- (G14) Glass, Clear, Aluminium framing system (P20) and Energy Assessment for performance requirements.
- (G15) Glass, Clear, Aluminium framing system (P20) and Energy Assessment for performance requirements.
- (G16) Glass, Clear, Aluminium framing system (P20) and Energy Assessment for performance requirements.
- (PC1) Paint finish, colour to match Dulux 'Natural White'
- (PC2) Paint finish, colour to match Dulux 'Bowlai'
- (SC1) Vertical Aluminium Blatten System, Colour to match P12
- (SC2) Vertical Aluminium Screen System, Colour to match G1 D1

NOTES:

1. ALL MATERIALS AND FINISHES TO BE USED SHALL BE APPROVED BY THE LOCAL AUTHORITY AND THE ARCHITECT.
2. ALL MATERIALS AND FINISHES TO BE USED SHALL BE APPROVED BY THE LOCAL AUTHORITY AND THE ARCHITECT.
3. ALL MATERIALS AND FINISHES TO BE USED SHALL BE APPROVED BY THE LOCAL AUTHORITY AND THE ARCHITECT.
4. ALL MATERIALS AND FINISHES TO BE USED SHALL BE APPROVED BY THE LOCAL AUTHORITY AND THE ARCHITECT.

CLIENT: Zhengde Real Estate Pty Ltd ATF Zhengde Unit Trust
Sully 1022 27/58 Baihirst Street STONEY NSW 2200

PROJECT INFO: Project No: 18014, Date: 08/12/2016, Drawing No: GA Elevations North Elevation



Address	Building Type	Project Title	Client	Scale	Drawn By	Checked By	Project No.	City No.	Draw No.	Date
818 ELIZABETH STREET	5 storey commercial building	818 ELIZABETH STREET	The Sydney Living Communities Trust of NSW	1:200	10100	10100	10100	10100	10100	10/11/2020
857 ELIZABETH STREET	The Sydney Living Communities Trust of NSW	857 ELIZABETH STREET	The Sydney Living Communities Trust of NSW	1:200	10100	10100	10100	10100	10100	10/11/2020
888-891 ELIZABETH STREET	Proposed Development	888-891 ELIZABETH STREET	Proposed Development	1:200	10100	10100	10100	10100	10100	10/11/2020
895-901 ELIZABETH STREET	Apartment Building	895-901 ELIZABETH STREET	Apartment Building	1:200	10100	10100	10100	10100	10100	10/11/2020
603 ELIZABETH STREET	Dwelling	603 ELIZABETH STREET	Dwelling	1:200	10100	10100	10100	10100	10100	10/11/2020

Code	Description	Material / Color
(AC)	Clear Glass Balustrade	Fixed to top of concrete slab
(AN)	Brickwork stretcher bond	Boval Blue™ Mix
(AW)	Brickwork in Pattern	Boval Blue™ Mix
(BN)	Brickwork L.T.M. Mix	Boval Blue™ Mix
(CC)	Metal Cladding System	With stainless steel concealed fasteners and stainless steel reveal. Copper Finish.
(GC)	Glass, Clear, Aluminium frame	Finishes to match PR2, refer to Energy Assessment for performance requirements.
(PC)	Paint finish	Colour to match PR2
(SC)	Vertical Aluminium Screen System	Colour to match C.D.I
(SC)	Vertical Aluminium Screen System	Colour to match C.D.I

Code	Description	Material / Color
(MW)	Metal Cladding System	With stainless steel concealed fasteners and stainless steel reveal. Copper Finish.
(GC)	Glass, Clear, Aluminium frame	Finishes to match PR2, refer to Energy Assessment for performance requirements.
(PC)	Paint finish	Colour to match PR2
(SC)	Vertical Aluminium Screen System	Colour to match C.D.I

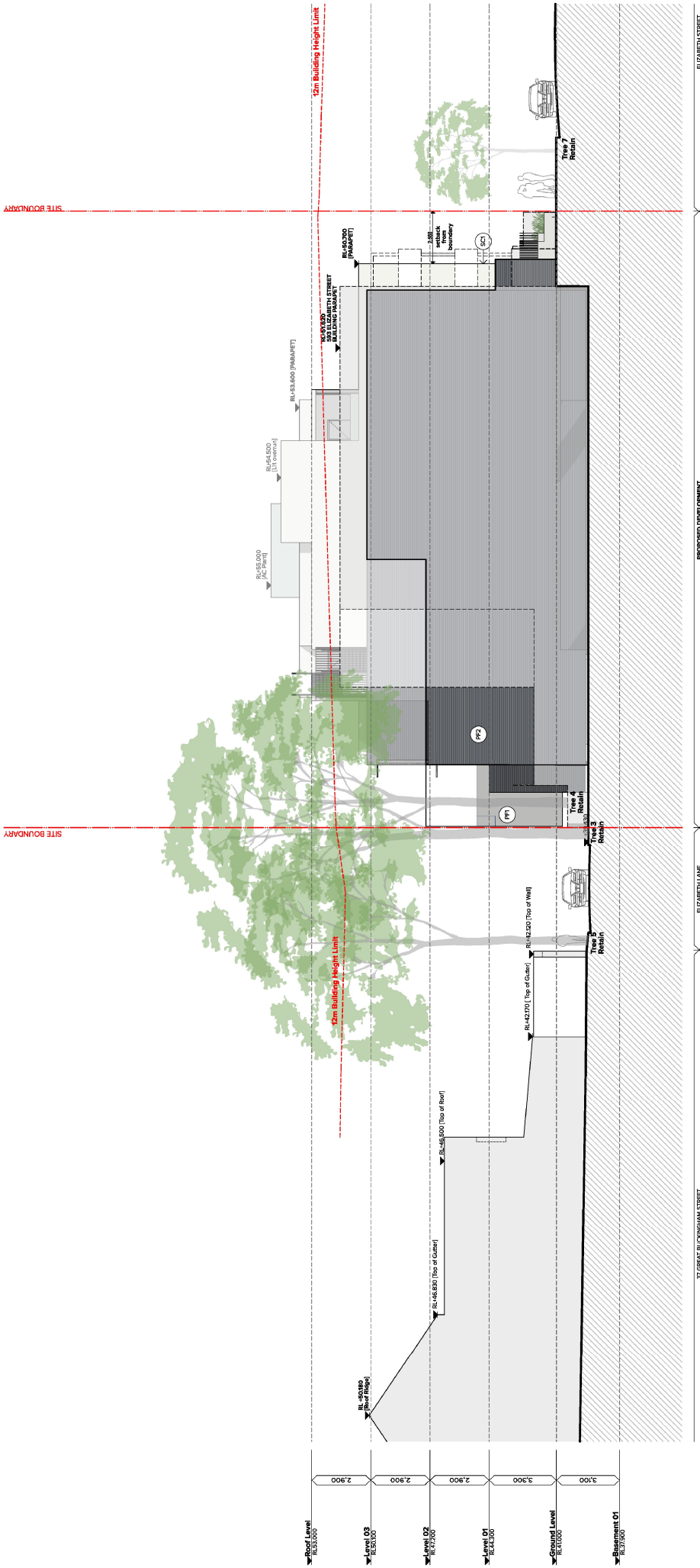
CLIENT:
Zhengde Real Estate Pty Ltd ATF Zhongde Unit Trust
 Suite 1002/37-39 Balmurst Street
 STONEY NSW 2200

10/11/2020
 818 ELIZABETH STREET, STONEY NSW 2200
 857 ELIZABETH STREET, STONEY NSW 2200
 888-891 ELIZABETH STREET, STONEY NSW 2200
 895-901 ELIZABETH STREET, STONEY NSW 2200
 603 ELIZABETH STREET, STONEY NSW 2200

TURNER
 GA Elevations
 West Elevation

Project Title: **Redfern Hotel**
 Address: **888-891 Elizabeth Street REDFERN NSW 2016**
 Drawing Title: **GA Elevations West Elevation**

TURNER
 Development Application
 18014
 DA-250-201
 10/11/2020



Roof Level RL33.600	2.900
Level 03 RL33.750	2.900
Level 02 RL33.900	2.900
Level 01 RL34.300	3.300
Ground Level RL34.300	3.100
Basement 01 RL33.700	

- Legend**
- (BW) Brickwork stretcher bond, Bowral Blue® Mk
 - (BW) Brickwork in Pattern, Bowled Joint, Bowral Blue® Mk
 - (G1) Glass, Clear, Aluminum Framing, Copper Finish
 - (G2) Glass, Clear, Aluminum Framing, Colour and Finish to match C.D.I. Refer to performance requirements.
 - (G3) Metal Cladding System with aluminium composite panels, Copper Finish
 - (PC) Paint finish, colour to match Dulux® Natural White
 - (PC) Paint finish, colour to match Dulux® Denim
 - (SC) Vertical Aluminum Screen System, Colour to match C.D.I

NOTES

1. ALL MATERIALS TO BE SUPPLIED BY THE CONTRACTOR AND TO BE INSTALLED IN ACCORDANCE WITH THE MANUFACTURER'S INSTRUCTIONS.

2. THE CONTRACTOR SHALL BE RESPONSIBLE FOR OBTAINING ALL NECESSARY APPROVALS AND PERMITS FROM THE LOCAL COUNCIL AND STATE AUTHORITIES.

3. THE CONTRACTOR SHALL BE RESPONSIBLE FOR OBTAINING ALL NECESSARY APPROVALS AND PERMITS FROM THE LOCAL COUNCIL AND STATE AUTHORITIES.

4. THE CONTRACTOR SHALL BE RESPONSIBLE FOR OBTAINING ALL NECESSARY APPROVALS AND PERMITS FROM THE LOCAL COUNCIL AND STATE AUTHORITIES.

CLIENT

Zhengde Real Estate Pty Ltd ATF Zhengde Unit Trust
 Suite 102/27-28 Bahner Street
 STONEY NSW 2200

NO.	DATE	DESCRIPTION	BY	CHKD BY	REVISION
1	24.05.18	Issue for Tender	JML	JML	1
2	15.06.18	Revised for Construction	JML	JML	2
3	15.06.18	Revised for Construction	JML	JML	3
4	15.06.18	Revised for Construction	JML	JML	4

Project Title
 Redfern Hotel
 385-391 Elizabeth Street REDFERN NSW 2016

Client
 Zhengde Unit Trust

GA Elevations
 South Elevation

Drawn by
 JML

Checked by
 JML

Project No.
 DA-250-301

Drawn Date
 14/05/18

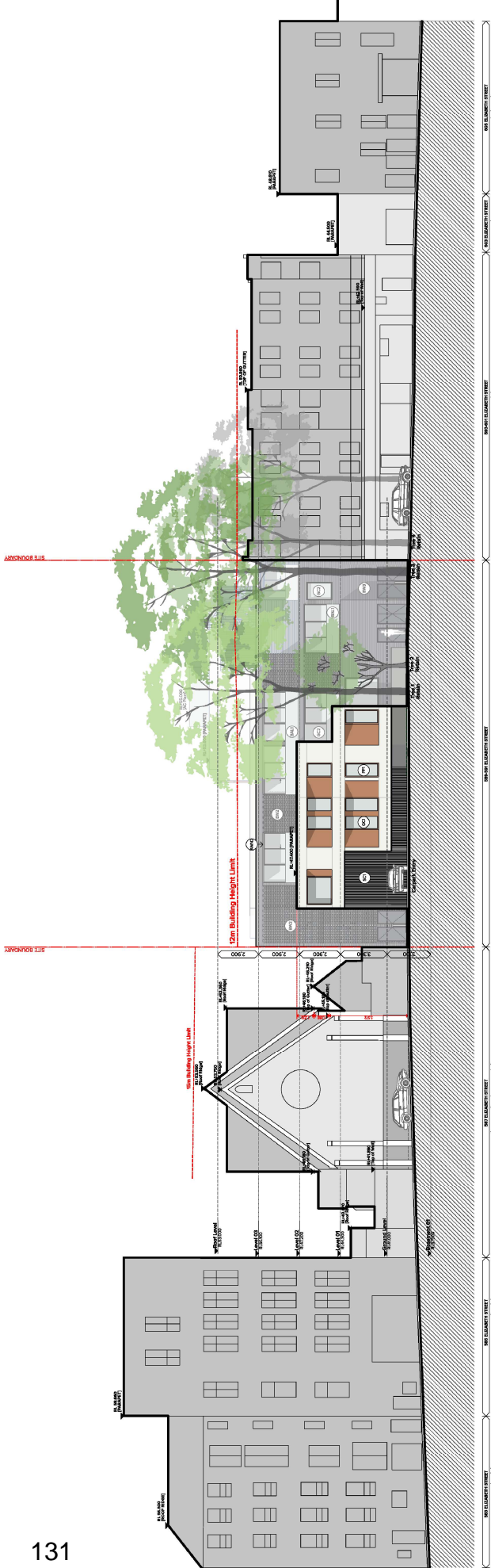
Scale
 1:100

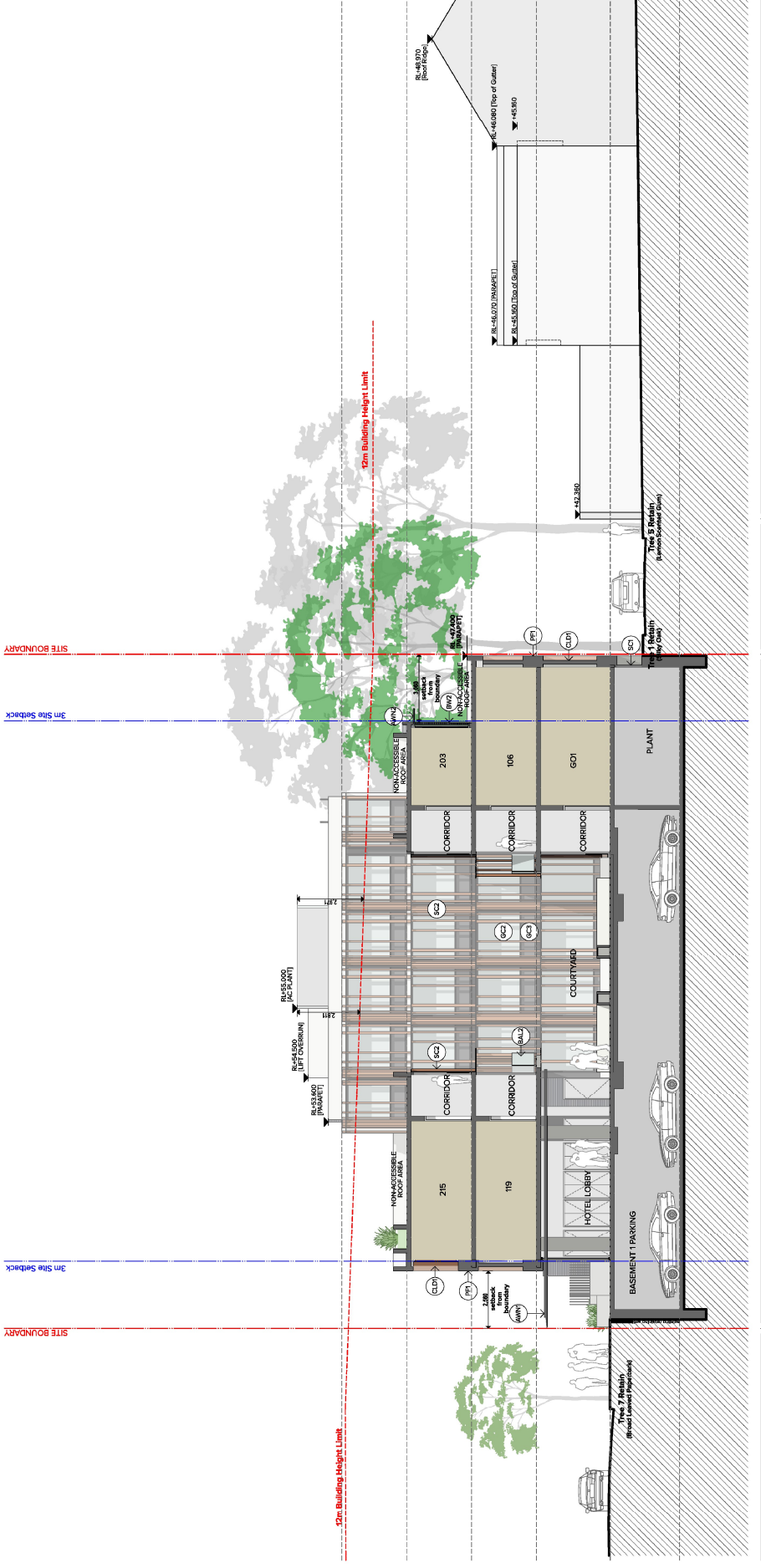
Sheet No.
 1 of 1

Project Name
 Redfern Hotel

TURNER

Level 10/200 Stoney Street
 Stoney NSW 2200
 Phone: 02 9387 9000
 Fax: 02 9387 9001
 Email: info@turner.com.au





Roof Level	RL 54.000
Level 03	RL 53.000
Level 02	RL 52.500
Level 01	RL 52.000
Ground Level	RL 51.000
Basement D1	RL 50.500

Legend

- (BA) Clear Glass Balustrade fixed to top of concrete slab
- (BW) Brickwork stretcher bond, loosed joint, 'Bowl Blue' Mix
- (BR) Brickwork in Pattern, loosed joint, 'Bowl Blue' Mix
- (CGL) Metal Cladding System with full concealed proposed finish, including light and reveals, Copper Finish
- (GC) Glass, Clear, Aluminium framing system, refer to Energy Assessment for performance requirements.
- (G2) Glass, Clear, Aluminium framing system, colour and finish to match PR2. Refer to Energy Assessment for performance requirements.
- (G3) Glass, Schedule 4, Aluminium framing system, colour and finish to match PR2. Refer to Energy Assessment for performance requirements.
- (GR) Brickwork stretcher bond, loosed joint, 'Bowl Blue' Mix
- (BR2) Brickwork in Pattern, loosed joint, 'Bowl Blue' Mix
- (PA) Paint finish, colour to match PR2 'Dulux 'Natural White'
- (PC) Paint finish, colour to match PR2 'Dulux 'Bottle'
- (SC1) Vertical Aluminium Screen System, Colour to match C.D.I
- (SC2) Vertical Aluminium Screen System, Colour to match C.D.I

ST GREAT BUCKINGHAM STREET ELIZABETH LANE PROPOSED DEVELOPMENT ELIZABETH STREET

NOTES

1. THIS DOCUMENT IS THE PROPERTY OF TURNER & TOWNSEND ARCHITECTURE. IT IS TO BE USED ONLY FOR THE PROJECT AND SITE SPECIFICALLY REFERRED TO IN THE TITLE. IT IS NOT TO BE REPRODUCED, COPIED, DISTRIBUTED, OR USED FOR ANY OTHER PROJECT WITHOUT THE WRITTEN PERMISSION OF TURNER & TOWNSEND ARCHITECTURE.

2. ALL DIMENSIONS ARE TO FACE UNLESS OTHERWISE SPECIFIED.

3. ALL LEVELS ARE TO THE FINISHED SURFACE UNLESS OTHERWISE SPECIFIED.

4. ALL MATERIALS AND FINISHES ARE TO BE APPROVED BY THE ARCHITECT PRIOR TO COMMENCEMENT OF WORK.

5. ALL WORK IS TO BE COMPLETED WITHIN THE SPECIFIED TIME FRAME.

6. ALL WORK IS TO BE COMPLETED TO THE SATISFACTION OF THE ARCHITECT.

7. ALL WORK IS TO BE COMPLETED TO THE SATISFACTION OF THE ARCHITECT.

8. ALL WORK IS TO BE COMPLETED TO THE SATISFACTION OF THE ARCHITECT.

9. ALL WORK IS TO BE COMPLETED TO THE SATISFACTION OF THE ARCHITECT.

10. ALL WORK IS TO BE COMPLETED TO THE SATISFACTION OF THE ARCHITECT.

CLIENT

Zhengde Real Estate Pty Ltd ATF Zhengde Unit Trust
 Suite 102/27-28 Bahndorf Street
 STONEY NSW 2200

PROJECT TITLE

Redfern Hotel
 385-391 Elizabeth Street REDFERN NSW 2016

CLIENT

GA Stations
 848/848A

DATE

21/04/2024

PROJECT NO.

DA-350-001

CLIENT

GA Stations

PROJECT TITLE

Redfern Hotel

CLIENT

GA Stations

PROJECT NO.

DA-350-001

CLIENT

GA Stations



Level 03 RL 44.500	Level 02 RL 43.700	Level 01 RL 43.300	Ground Level RL 43.000	Basement 01 RL 37.900
3,900	2,900	2,900	3,300	3,100

593 ELIZABETH STREET
Apartment Building

595-597 ELIZABETH STREET
Proposed Development

597 ELIZABETH STREET
The Spire of a Woman Church

Sheet No. 18014

DA-359-01

Project No. 595-597 Elizabeth Street Redfern NSW 2016

Client: Zhengde Real Estate Pty Ltd AIF Zhongde Unit Trust
S/101, 102/27-28 Bathurst Street
SYDNEY NSW 2000

Drawn By: JIM VELLE
Checked By: JIM VELLE
Date: 14/05/2024

Legend

- (M) Clear Glass Balustrade fixed to top of concrete slab
- (B) Brickwork stretcher bond; bowed joint; 'Bowed Blue' Mix
- (W) Brickwork in Pattern; bowed joint; 'Bowed Blue' Mix
- (G) Metal Cladding System with aluminium composite panels; bowed joint; 'Bowed Blue' Mix
- (C) Glass, Clear, Aluminium framing system; refer to Energy Assessment for performance requirements.
- (S) Glass, Clear, Aluminium framing system; refer to Energy Assessment for performance requirements.
- (P) Paint finish, colour to match Dulux 'Natural White'
- (F) Vertical Aluminium Screen System; refer to match C.D.I
- (D) Brickwork in R.A. Mix; bowed joint; 'Bowed Blue' Mix
- (V) Vertical Aluminium Screen System; refer to match C.D.I

NOTES

1. ALL DIMENSIONS ARE IN METRES UNLESS OTHERWISE SPECIFIED.

2. REFER TO THE ARCHITECT'S GENERAL NOTES FOR A COMPLETE LIST OF NOTES.

3. REFER TO THE ARCHITECT'S GENERAL NOTES FOR A COMPLETE LIST OF NOTES.

4. REFER TO THE ARCHITECT'S GENERAL NOTES FOR A COMPLETE LIST OF NOTES.

5. REFER TO THE ARCHITECT'S GENERAL NOTES FOR A COMPLETE LIST OF NOTES.